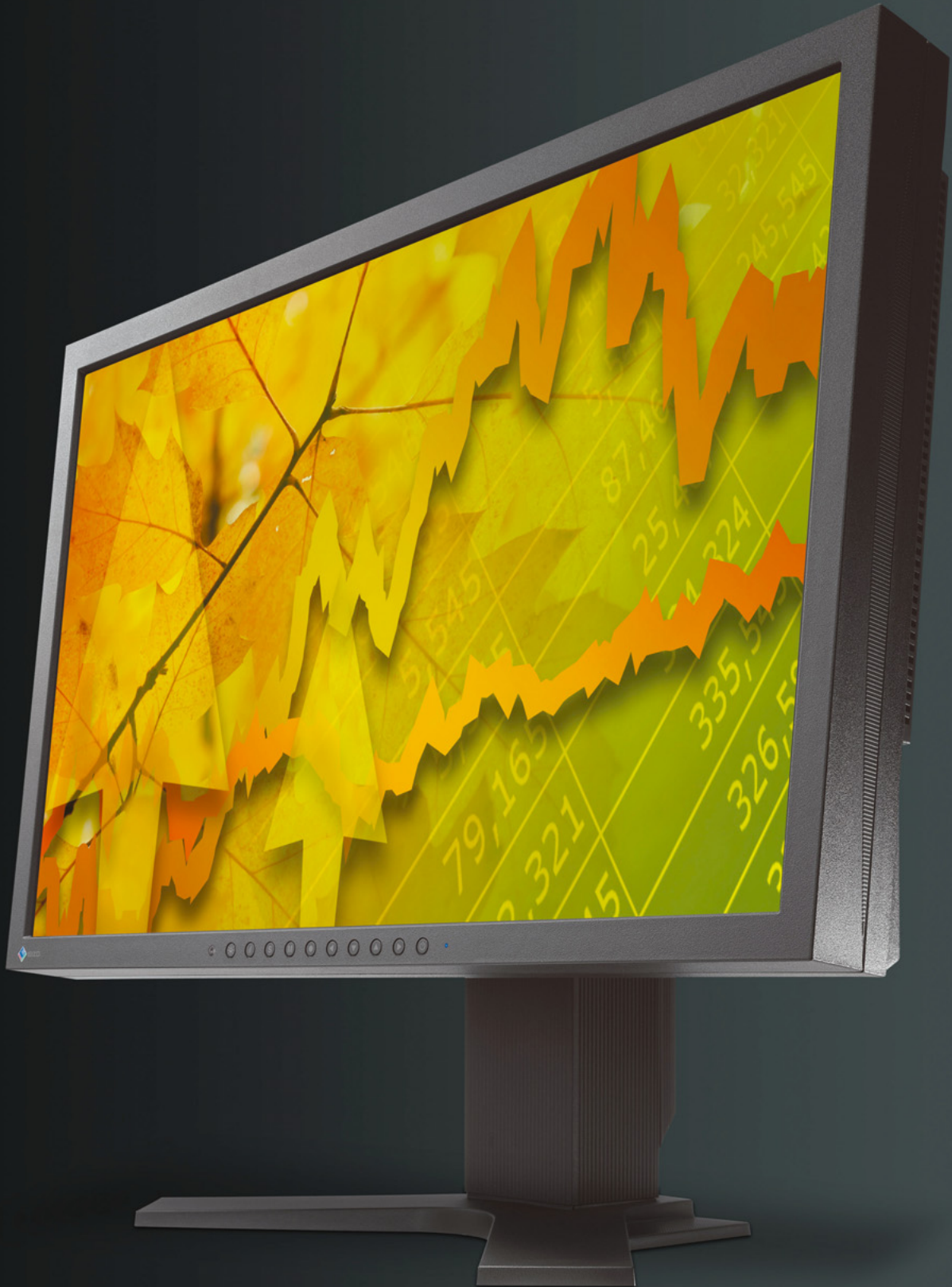




FlexScan Widescreen Monitors

Great savings, small footprint



FEATURES

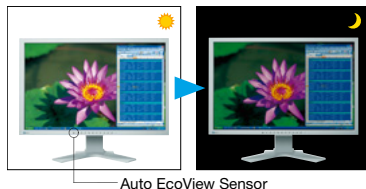
*R*ising energy costs, global environmental concerns, and demands for increased worker productivity require creative solutions. To address these challenges, EIZO introduces its new widescreen monitors with EcoView features such as reduced power consumption, and improved visual ergonomics and performance. Available in 24.1" and 22" sizes with VA or TN technology, these monitors let you go green and save money at the same time.

Optimized Brightness with Auto EcoView

A sensor on the front bezel measures ambient light and optimizes the screen's brightness, ensuring that these monitors are never too bright or too dark. This results in improved ergonomics and reduced eye strain, while cutting power consumption by up to 48%. Whereas most brightness sensors use just one reference point to determine the ideal screen brightness, Auto EcoView uses two — one for light and one for dark ambient environments. This allows the monitors to more accurately achieve the ideal brightness in both brightly and dimly lit rooms.

Models	Auto EcoView OFF*	Auto EcoView ON	Power Reduction	Reduced Power Consumption in Wh per day
FlexScan S2202W	38 W	23 W	39%	15
FlexScan S2232W	66 W	34 W	48%	32
FlexScan S2402W	43 W	27 W	38%	16
FlexScan S2432W	71 W	40 W	43%	31

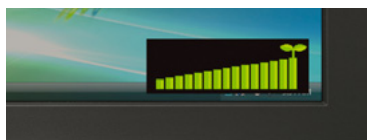
* Figures for Auto EcoView turned off assume monitors are set to the default factory brightness of 100%.



Auto EcoView optimizes the screen's brightness to levels akin to viewing a sheet of paper under ambient light conditions.

Power Savings with EcoView Index

New to the FlexScan series, a user activated on-screen index shows the level of power savings in correlation with the monitor's brightness to encourage environmental consciousness while working.



When EcoView Index is fully illuminated, the monitor is operating at optimum energy efficiency.

Direct Energy Savings

The power save mode and off timer on these widescreen monitors reduces power consumption to less than 1.5 watts on the S2232W and S2432W, and less than 0.7 watts on the S2202W and S2402W. When turned off via the main power switch, these monitors consume no electricity at all. With today's increasing office energy expenses, zero-watt power consumption helps save electricity and lower costs over the long run.

Centralized Power Management

EcoView NET remote power management software provides centralized control over the power settings of all units on a network. Settings include brightness adjustment, turning the monitors' power and Auto EcoView function on and off, and remote and manual scheduling. EcoView NET is compatible with Windows Vista and XP and available free of charge.

Digital and Analog Inputs

DVI-D and D-Sub inputs provide both digital and analog connectivity. When connected to two computers at once, you can quickly switch between them via a front panel button. Support for high-bandwidth digital content protection (HDCP) through the DVI-D input allows for viewing of content from HDCP-equipped computers.



DVI Input Level Adjustment

Compensates for image quality degradation that may occur when connecting a monitor with a signal switch box or via a long cable.

Individual Adjustment of Gamma

To provide better image consistency in multi-monitor environments, EIZO performs advanced gamma adjustment at the factory, which minimizes discrepancies among monitor gamma characteristics.

Fine Contrast Mode Selection

For optimum viewing of different kinds of content, EIZO's Fine Contrast function includes modes for office applications (Text mode), video (Movie mode), graphics (Picture mode), web browsing (sRGB mode), and user-defined settings (Custom mode). Modes switch automatically with the bundled ScreenManager Pro for LCD software, or manually with the press of a button.

Unobtrusive Speakers

0.5 watt speakers are hidden within the monitor cabinet, so you can enjoy sound while bezel size is kept to a minimum. If



you require greater

volume, the separately sold i-Sound L3 sound unit

with dual 0.9 watt speakers can be attached to the bottom of the monitor.



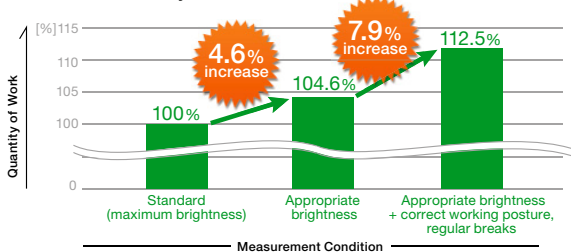
i-Sound L3 sound unit

Improved Work Efficiency, Reduced Visual Fatigue

EIZO conducted a survey in 2008 to establish the relationship between eye fatigue and monitor use. The results showed that features like Auto EcoView, ergonomic stands, and the EyeCare utility helped reduce eye fatigue and improved work efficiency by 12.5%.

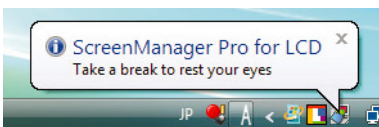
For a white paper regarding this study visit www.eizo.com/support/wp/pdf/wp_08-001.pdf

Increases in Quantity of Monitor Work



EyeCare Utility

To promote healthier work habits, EIZO's new EyeCare utility prompts workers to take scheduled breaks to avoid eye fatigue caused by prolonged monitor use.



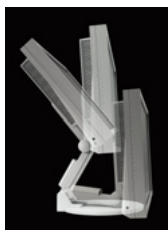
EyeCare reminds workers to take regular breaks to prevent eye fatigue.

Placement Flexibility

A selection of ergonomic stands offer height adjustment, tilt, swivel, and portrait mode viewing.



Height adjustable stand



EzUp stand

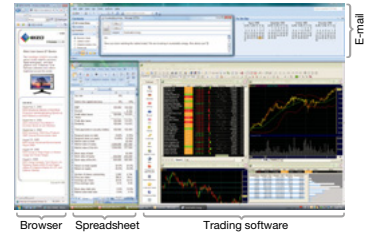


QM1 quick mount attachment

For installations that require frequent rearrangement of equipment, a quick mount attachment option allows the monitor to be quickly and easily mounted and dismantled with the pull of a lever.

Organize Applications with EIZO ScreenSlicer

This bundled software utility lets you more effectively use your screen through partitioning. Simply drop your windows into configurable partitioned areas and they will be aligned instantly.



Software windows aligned in partitioned areas.

EIZO Eco Products 2009 Compliant

Stemming from a commitment to develop products with minimal environmental impact, EIZO introduced its own internal environmental label "EIZO Eco Products" in 2002. The latest version, EIZO Eco Products 2009, sets strict internal requirements for manufacturing and packaging, stipulates that the monitor must not consume any power when turned off, and requires that its eco profile is available on the EIZO web site.



Commitment to Quality

While outsourcing production is now common practice in the monitor industry, EIZO continues to manufacture its products the same way it has throughout its 40 year history — with its own staff at its own factories in Japan. This allows EIZO to keep close control over production quality and offer the industry's only 5-year manufacturer's limited warranty.



EIZO monitors are thoroughly inspected at every step during manufacturing to maintain strict quality control.



Accessories

Accessories available include an attachable sound unit, mounting arms, and panel protectors with both glossy and non-glare sides. For detailed information, please visit www.eizo.com/products/accessories.



FlexScan S2432W

FlexScan S2402W

FlexScan S2232W

FlexScan S2202W

Model Variations		Height Adjustable Stand, EzUp Stand, Without Stand	Height Adjustable Stand, EzUp Stand, Without Stand	Height Adjustable Stand, Tilt Stand, EzUp Stand, Without Stand	Height Adjustable Stand, Tilt Stand, EzUp Stand, Without Stand	
Panel	Panel Size and Type	61 cm (24.1") TFT color LCD panel	61 cm (24.1") TFT color LCD panel	56 cm (22") TFT color LCD panel	56 cm (22") TFT color LCD panel	
	Viewing Angles (H, V)	178°, 178° (at contrast ratio of 10:1)	170°, 160° (at contrast ratio of 10:1) 178°, 178° (at contrast ratio of 5:1)	178°, 178° (at contrast ratio of 10:1)	170°, 160° (at contrast ratio of 10:1) 178°, 178° (at contrast ratio of 5:1)	
	Brightness / Contrast	360 cd/m ² / 1000:1	300 cd/m ² / 1000:1	350 cd/m ² / 1200:1	300 cd/m ² / 1000:1	
	On/Off Response Time	16 ms (typical)	5 ms (typical)	12 ms (typical)	5 ms (typical)	
	Midtone Response Time ¹	6 ms	–	6 ms	–	
	Native Resolution	1920 × 1200	1920 × 1200	1680 × 1050	1680 × 1050	
	Active Display Size (H × V)	518.4 × 324 mm	518.4 × 324 mm	473.8 × 296.1 mm	473.8 × 296.1 mm	
	Viewable Image Size	Diagonal: 611 mm	Diagonal: 611 mm	Diagonal: 558 mm	Diagonal: 558 mm	
	Pixel Pitch	0.270 × 0.270 mm	0.270 × 0.270 mm	0.282 × 0.282 mm	0.282 × 0.282 mm	
	Display Colors	16.77 million from a palette of 1.06 billion	16.77 million from a palette of 1.06 billion	16.77 million from a palette of 1.06 billion	16.77 million from a palette of 1.06 billion	
Cabinet Colors		Gray, Black	Gray, Black	Gray, Black	Gray, Black	
Dot Clock		Analogue: 202.5 MHz, Digital: 162 MHz	Analogue: 202.5 MHz, Digital: 162 MHz	Analogue: 150 MHz, Digital: 120 MHz	Analogue: 150 MHz, Digital: 120 MHz	
Scanning Frequency (H, V)	Analog	31 – 94 kHz, 55 – 76 Hz	31 – 94 kHz, 55 – 76 Hz	31 – 82 kHz, 55 – 76 Hz	31 – 82 kHz, 55 – 76 Hz	
	Digital	31 – 76 kHz, 59 – 61 Hz (VGA Text: 69 – 71 Hz)	31 – 76 kHz, 59 – 61 Hz (VGA Text: 69 – 71 Hz)	31 – 65 kHz, 59 – 61 Hz (VGA Text: 69 – 71 Hz)	31 – 65 kHz, 59 – 61 Hz (VGA Text: 69 – 71 Hz)	
Input Terminals		D-Sub mini 15 pin, DVI-D 24 pin, (switchable)	D-Sub mini 15 pin, DVI-D 24 pin, (switchable)	D-Sub mini 15 pin, DVI-D 24 pin, (switchable)	D-Sub mini 15 pin, DVI-D 24 pin, (switchable)	
USB Port / Standard		1 upstream, 2 downstream / USB 2.0	–	1 upstream, 2 downstream / USB 2.0	–	
HDCP Support ²		DVI-D	DVI-D	DVI-D	DVI-D	
Plug & Play		VESA DDC/CI, DDC 2B	VESA DDC/CI, DDC 2B	VESA DDC/CI, DDC 2B	VESA DDC/CI, DDC 2B	
Power	Power Requirements	AC 100 – 120 V, 200 – 240 V: 50 / 60 Hz	AC 100 – 120 V, 200 – 240 V: 50 / 60 Hz	AC 100 – 120 V, 200 – 240 V: 50 / 60 Hz	AC 100 – 120 V, 200 – 240 V: 50 / 60 Hz	
	Power Consumption	95 W (maximum), 40 W (typical)	58 W (maximum), 27 W (typical)	90 W (maximum), 32 W (typical)	51 W (maximum), 23 W (typical)	
	Power Save Mode	Less than 1.5 W	Less than 0.7 W	Less than 1.5 W	Less than 0.7 W	
Physical Specifications	Height Adjustment Range	With Height Adjustable Stand: 82 mm With EzUp Stand: 153.1 mm	With Height Adjustable Stand: 82 mm With EzUp Stand: 153.1 mm	With Height Adjustable Stand: 82 mm With EzUp Stand: 165 mm	With Height Adjustable Stand: 82 mm With EzUp Stand: 165 mm	
	Tilt / Swivel / Pivot	With Height Adjustable Stand: 40° Up, 0° Down / 35° Right, 35° Left / 90° With EzUp Stand: 25° Up, 0° Down / 172° Right, 172° Left / 90°	With Height Adjustable Stand: 40° Up, 0° Down / 35° Right, 35° Left / 90° With EzUp Stand: 25° Up, 0° Down / 172° Right, 172° Left / 90°	With Height Adjustable Stand: 40° Up, 0° Down / 35° Right, 35° Left / 90° With Tilt Stand: 30° Up, 5° Down / – / – With EzUp Stand: 25° Up, 0° Down / 172° Right, 172° Left / 90°	With Height Adjustable Stand: 40° Up, 0° Down / 35° Right, 35° Left / 90° With Tilt Stand: 30° Up, 5° Down / – / – With EzUp Stand: 25° Up, 0° Down / 172° Right, 172° Left / 90°	
	Dimensions (W × H × D)	With Height Adjustable Stand: 566 × 456 – 538 × 208.5 mm, With EzUp Stand: 566 × 380.4 – 533.5 × 279.9 – 307.6 mm, Without Stand: 566 × 367 × 85 mm	With Height Adjustable Stand: 566 × 456 – 538 × 208.5 mm, With EzUp Stand: 566 × 380.4 – 533.5 × 279.9 – 307.6 mm, Without Stand: 566 × 367 × 85 mm	With Height Adjustable Stand: 511 × 439 – 521 × 208.5 mm, With Tilt Stand: 511 × 415 × 205 mm, With EzUp Stand: 511 × 351.5 – 516.5 × 279.9 – 307.5 mm, Without Stand: 511 × 333 × 85 mm	With Height Adjustable Stand: 507 × 439 – 521 × 208.5 mm, With Tilt Stand: 507 × 415 × 205 mm, With EzUp Stand: 507 × 351.5 – 516.5 × 279.9 – 296.4 mm, Without Stand: 507 × 333 × 74 mm	
	Net Weight	With Height Adjustable Stand: 10.2 kg, With EzUp Stand: 12 kg, Without Stand: 7.2 kg	With Height Adjustable Stand: 10.2 kg, With EzUp Stand: 12 kg, Without Stand: 7.2 kg	With Height Adjustable Stand: 9.6 kg, With Tilt Stand: 7.6 kg, With EzUp Stand: 11.4 kg, Without Stand: 6.6 kg	With Height Adjustable Stand: 8.8 kg, With Tilt Stand: 6.8 kg, With EzUp Stand: 10.6 kg, Without Stand: 5.8 kg	
Display Mode Options		Fine Contrast (Text, Picture, Movie, sRGB, Custom), Auto Fine Contrast ³	Fine Contrast (Text, Picture, Movie, sRGB, Custom), Auto Fine Contrast ³	Fine Contrast (Text, Picture, Movie, sRGB, Custom), Auto Fine Contrast ³	Fine Contrast (Text, Picture, Movie, sRGB, Custom), Auto Fine Contrast ³	
Screen-Manager OSD Adjustment Functions	Screen Adjustment	Clock, Phase, Position, Range (Auto), Signal Filter, Screen Size (full screen, enlarge, normal), Smoothing (5 stages), Border Intensity	Clock, Phase, Position, Range (Auto), Signal Filter, Screen Size (full screen, enlarge, normal), Smoothing (5 stages), Border Intensity	Clock, Phase, Position, Range (Auto), Signal Filter, Screen Size (full screen, enlarge, normal), Smoothing (5 stages), Border Intensity	Clock, Phase, Position, Range (Auto), Signal Filter, Screen Size (full screen), Smoothing (5 stages)	
	Color Adjustment	Brightness, Contrast, Gamma, Temperature, Saturation, Hue, Gain, Reset	Brightness, Contrast, Gamma, Temperature, Saturation, Hue, Gain, Reset	Brightness, Contrast, Gamma, Temperature, Saturation, Hue, Gain, Reset	Brightness, Contrast, Gamma, Temperature, Saturation, Hue, Gain, Reset	
	Power Save Settings	Analog	PowerManager (VESA DPMS)	PowerManager (VESA DPMS)	PowerManager (VESA DPMS)	PowerManager (VESA DPMS)
		Digital	PowerManager (DVI DMPM)	PowerManager (DVI DMPM)	PowerManager (DVI DMPM)	PowerManager (DVI DMPM)
	Other Settings	Volume	Volume	Volume	Volume	
Other Settings	EcoView Index, Sound Power Save, Signal Switching, Product Information (name, serial number, resolution, operating time), OSD Menu, Adjustment Lock, DDC/CI Lock, DVI Input Level, Languages, Power Indicator, Off Timer, Reset	EcoView Index, Sound Power Save, Signal Switching, Product Information (name, serial number, resolution, operating time), OSD Menu, Adjustment Lock, DDC/CI Lock, DVI Input Level, Languages, Power Indicator, Off Timer, Reset	EcoView Index, Sound Power Save, Signal Switching, Product Information (name, serial number, resolution, operating time), OSD Menu, Adjustment Lock, DDC/CI Lock, DVI Input Level, Languages, Power Indicator, Off Timer, Reset	EcoView Index, Sound Power Save, Signal Switching, Product Information (name, serial number, resolution, operating time), OSD Menu, Adjustment Lock, DDC/CI Lock, DVI Input Level, Languages, Power Indicator, Off Timer, Reset		
Audio		Dual 0.5 W built-in speakers	Dual 0.5 W built-in speakers	Dual 0.5 W built-in speakers	Dual 0.5 W built-in speakers	
Certifications and Standards		TCO'03, TÜV/Ergonomics (including ISO 13406-2), TÜV/GS, c-Tick, CE, CB, UL (cTÜVus), RoHS, WEEE, EPEAT Silver, EIZO Eco Products 2009	TCO'03, TÜV/Ergonomics (including ISO 13406-2), TÜV/GS, c-Tick, CE, CB, UL (cTÜVus), RoHS, WEEE, EPEAT Silver, EIZO Eco Products 2009	TCO'03, TÜV/Ergonomics (including ISO 13406-2), TÜV/GS, c-Tick, CE, CB, UL (cTÜVus), CSA (cTÜVus), FCC-B, Canadian ICES-003-B, TÜV/S, VCCI-B, EPA ENERGY STAR®, RoHS, WEEE, EPEAT Silver, EIZO Eco Products 2009	TCO'03, TÜV/Ergonomics (including ISO 13406-2), TÜV/GS, c-Tick, CE, CB, UL (cTÜVus), CSA (cTÜVus), FCC-B, Canadian ICES-003-B, TÜV/S, VCCI-B, EPA ENERGY STAR®, RoHS, WEEE, EPEAT Silver, EIZO Eco Products 2009	
Supplied Accessories		AC power cord, signal cables (analog and digital), USB cable, audio cable, EIZO LCD Utility Disk, setup guide	AC power cord, signal cables (analog and digital), audio cable, EIZO LCD Utility Disk, setup guide	AC power cord, signal cables (analog and digital), USB cable, audio cable, EIZO LCD Utility Disk, setup guide	AC power cord, signal cables (analog and digital), audio cable, EIZO LCD Utility Disk, setup guide	
Warranty		Five Years ⁴	Five Years ⁴	Five Years ⁴	Five Years ⁴	

¹ Average response time measured between each grayscale level of 31, 63, 95, 127, 159, 191, and 223. ² Display with audio/video devices is not supported. ³ Bundled ScreenManager Pro for LCD software is necessary to activate Auto Fine Contrast. When used with the FlexScan S2232W and S2432W, this software is compatible with Microsoft Windows Vista/XP, and with the FlexScan S2202W and S2402W, it is compatible with Vista. ⁴ The usage time is limited to 30,000 hours or less, and the warranty period of the LCD panel and backlight is limited to three years from the date of purchase. With current LCD technology, a panel may contain a limited number of missing or flickering pixels.

